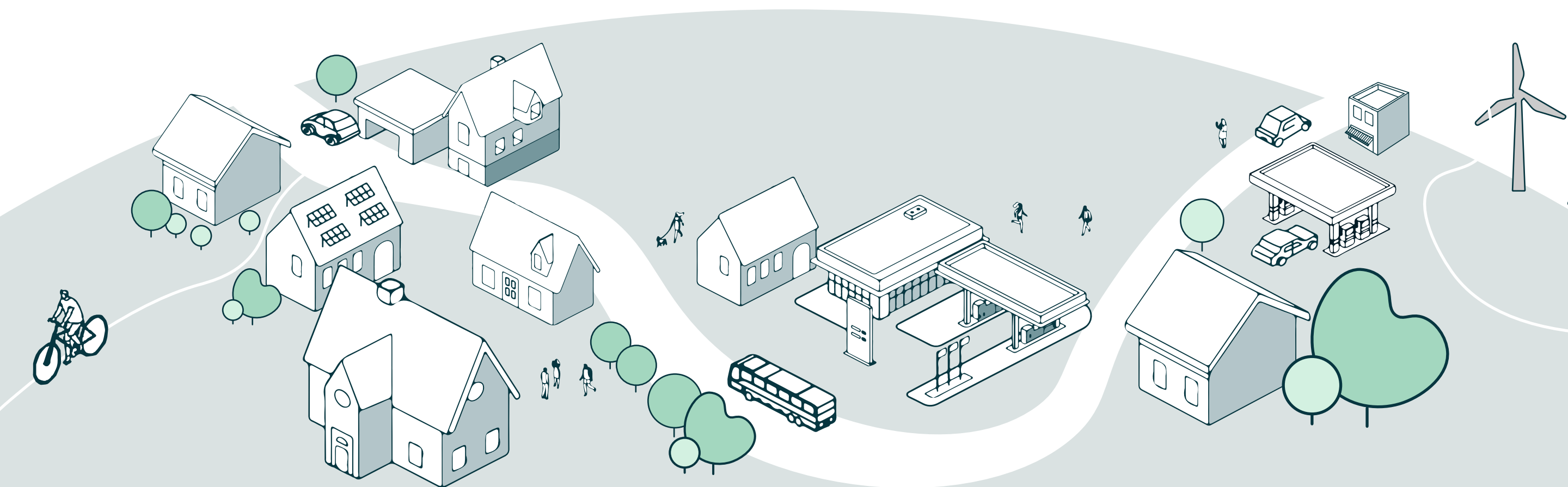
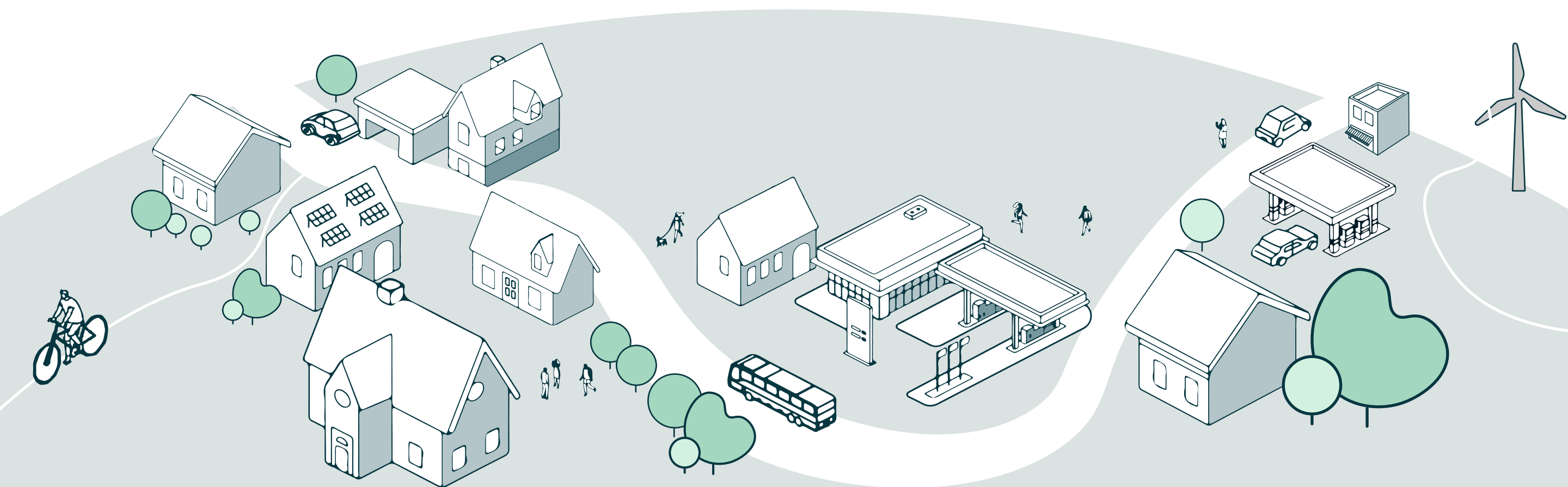


ENGINEERING CONSULTANT



Can you introduce your organization?

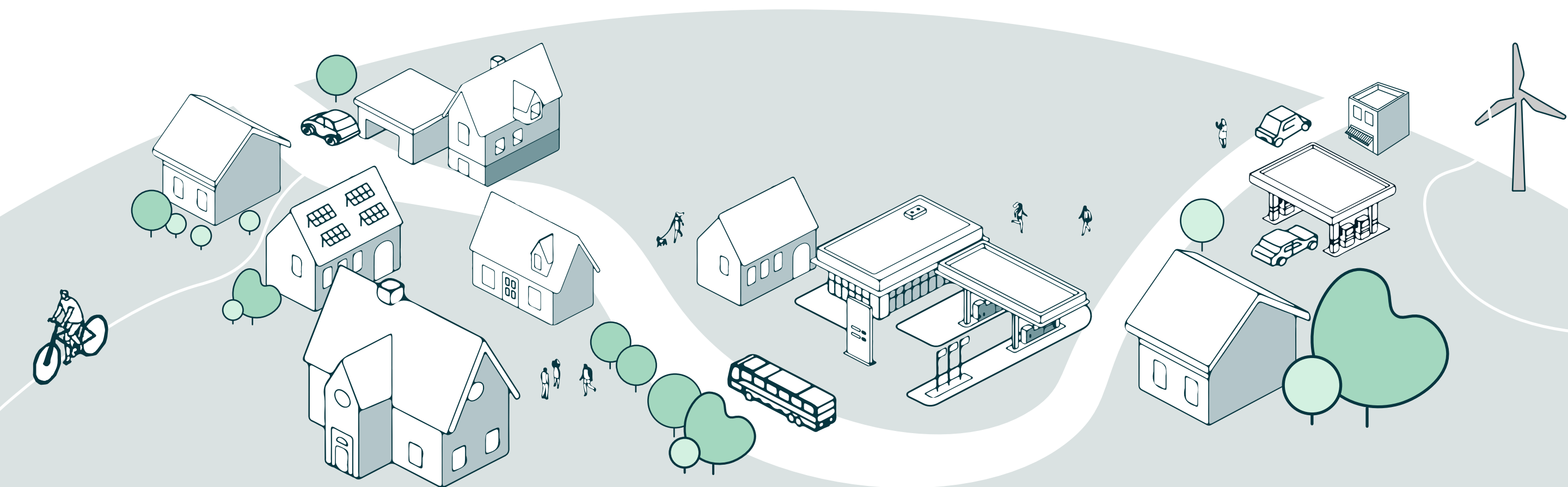
Schroeder & associés is an engineering consultancy founded in 1961 that offers comprehensive project management services. Shroeder & Associés SA develops its consulting activities in 3 fundamental areas: structure, infrastructure and services. With more than 60 years of experience and with the support of some 450 employees and various specialised partners in Luxembourg and abroad, the design office offers its services, experience and know-how to its clients. S&A is well implemented on the local level and developed in the past several projects for the municipality of Beckerich.



What specific challenges do you anticipate in developing or applying an Assessment Framework for Urban Regeneration (AFUR)?

The development and application of an assessment framework for urban regeneration (AFUR) poses a number of challenges, in particular the management of multifactorial complexity such as social, economic and environmental factors. Added to this is the management of stakeholders towards consensus when they sometimes have conflicting priorities.

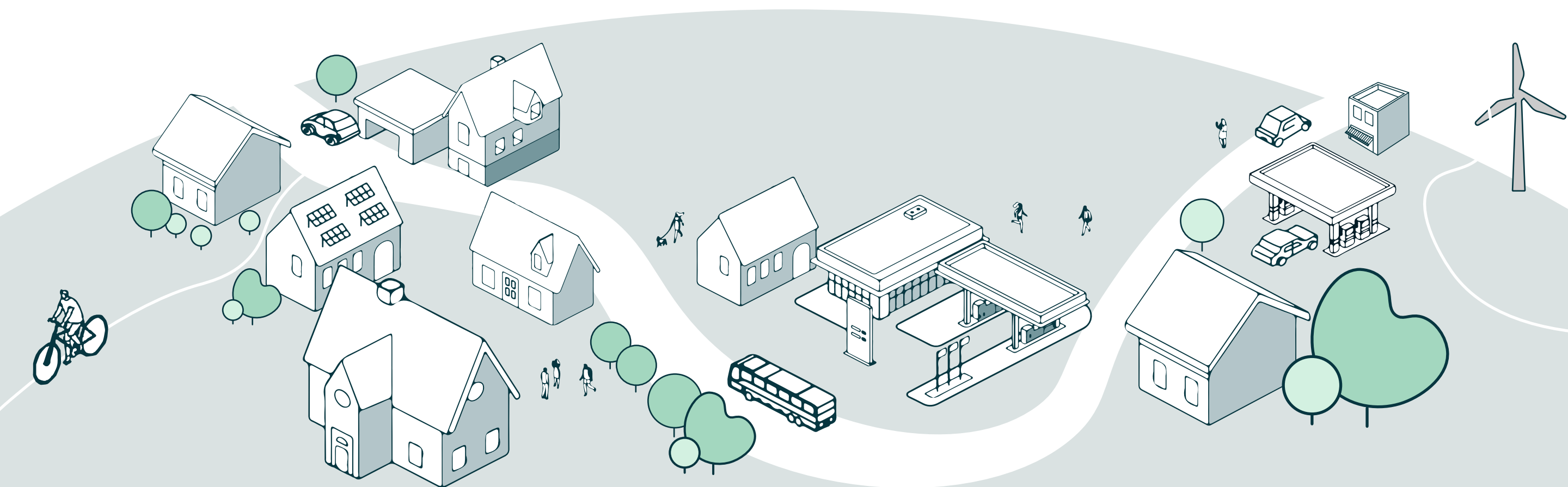
Another challenge will be to create a relationship of trust with citizens in order to gather not only their needs but also information about their habits and plans.

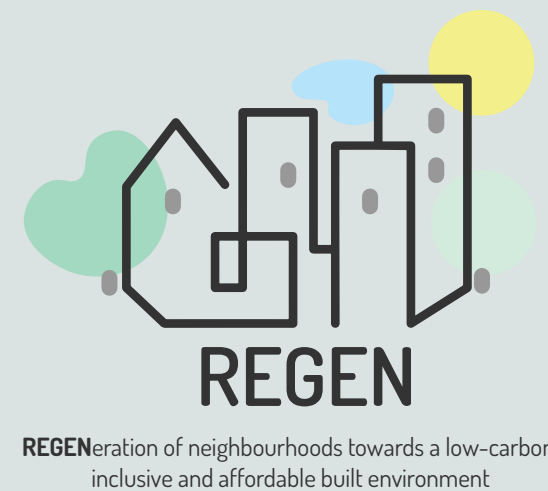


How will your organization contribute to the development/ monitoring of the four pilot demonstration projects?

Our office will be involved in the Beckerich pilot site. We will be collecting data on materials that can be reused in existing buildings. We will participate in the development of a methodology that could promote the re-use of local deconstruction materials. We will be taking part in the analysis feedback workshops.

Our role in the project will be the collection of data on the typology of the different buildings and the specific analysis of the different building materials. The objective is to make a global inventory of the resources available in the municipality.





Want to learn more?

<https://regenproject.eu/>

and follow us on social media



@RegenEuProject



REGEN EU Project

