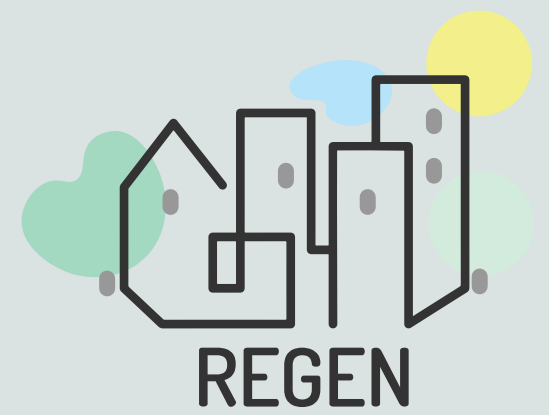
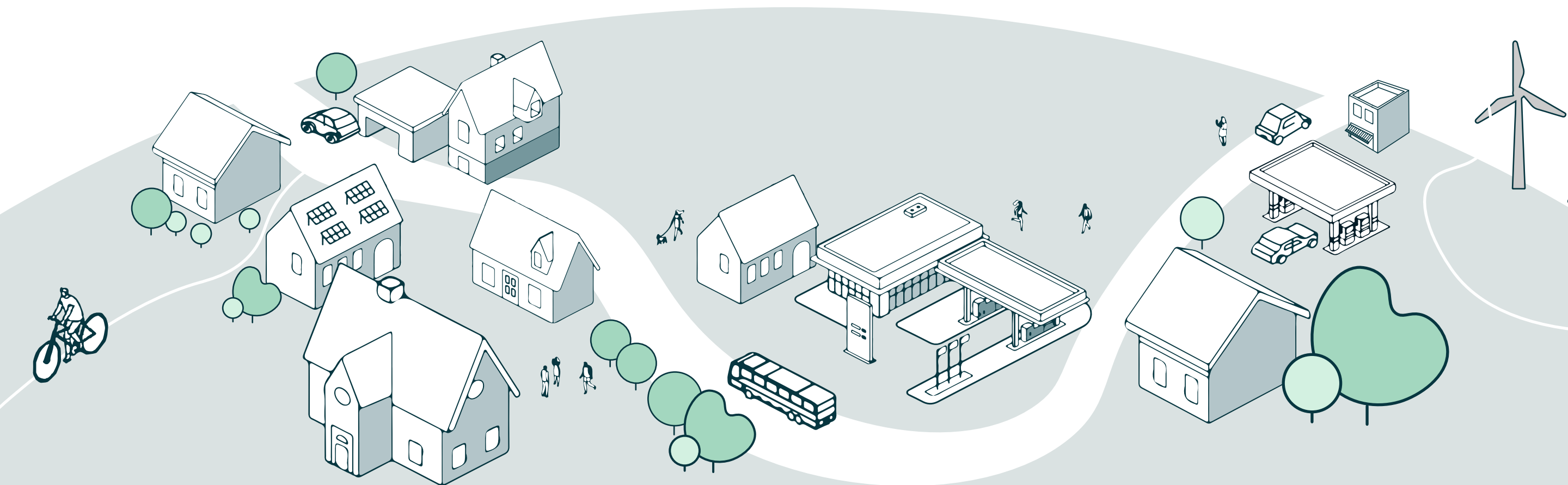


THE **IMPACT** LAB™



REGENeration of neighbourhoods towards a low-carbon,
inclusive and affordable built environment

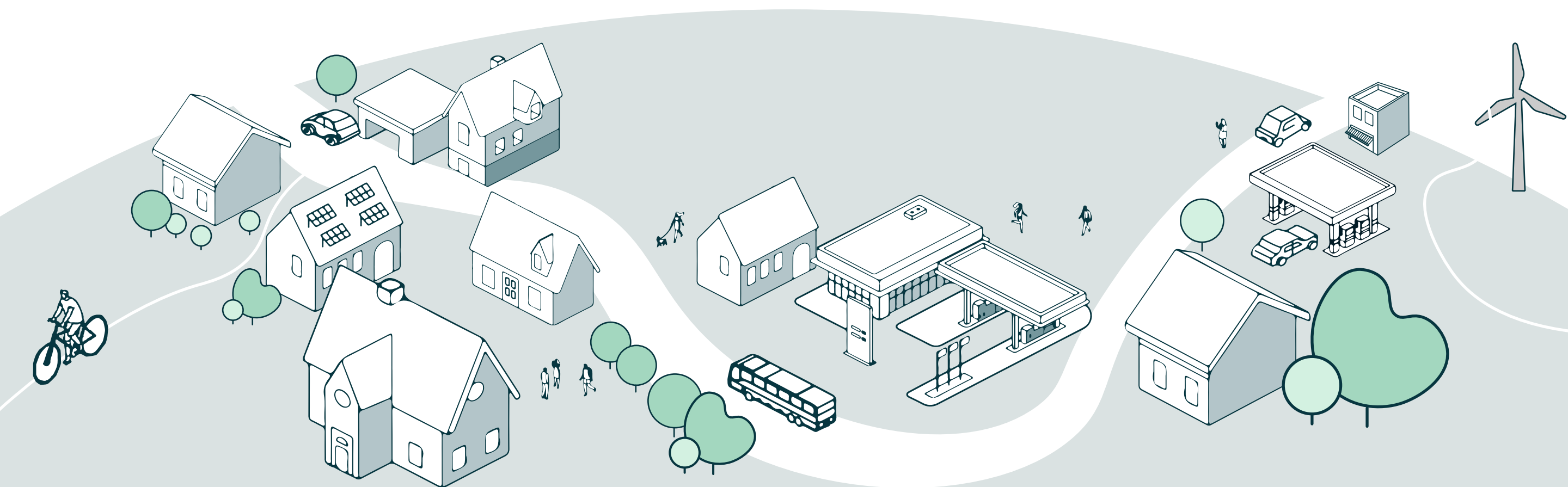
STRATEGIC CONSULTANT



Can you introduce your organization?

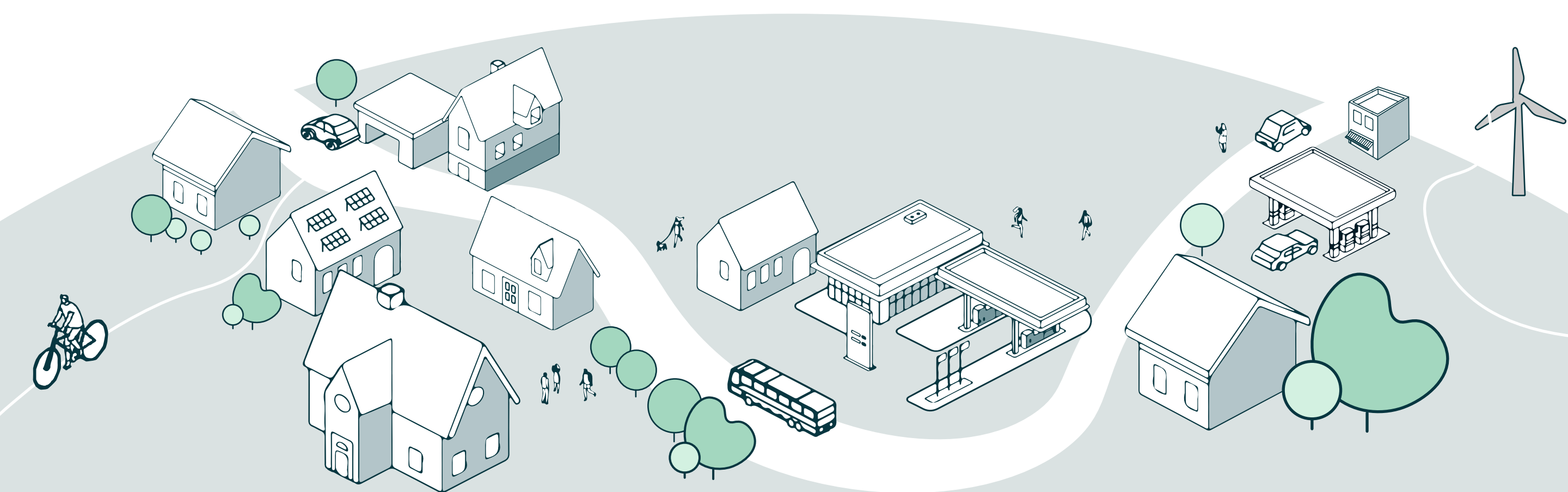
The Impact Lab is a boutique strategy consultancy offering three kinds of services:

1. **Multi-Stakeholder Engagement, Citizen Participation, and Collaborative Innovation:** We develop strategies for truly open, participatory innovation and change-making processes.
2. **Impact Measurement Solutions:** We design rigorous progress monitoring and impact measurement frameworks to make sure a project, program, or initiative generates tangible results.
3. **Strategic Concepts:** We develop strategic missions, visions, strategic guidelines, market entry and positioning strategies, business model canvases, feasibility studies, budgets, programmes, scenarios, and implementation plans.



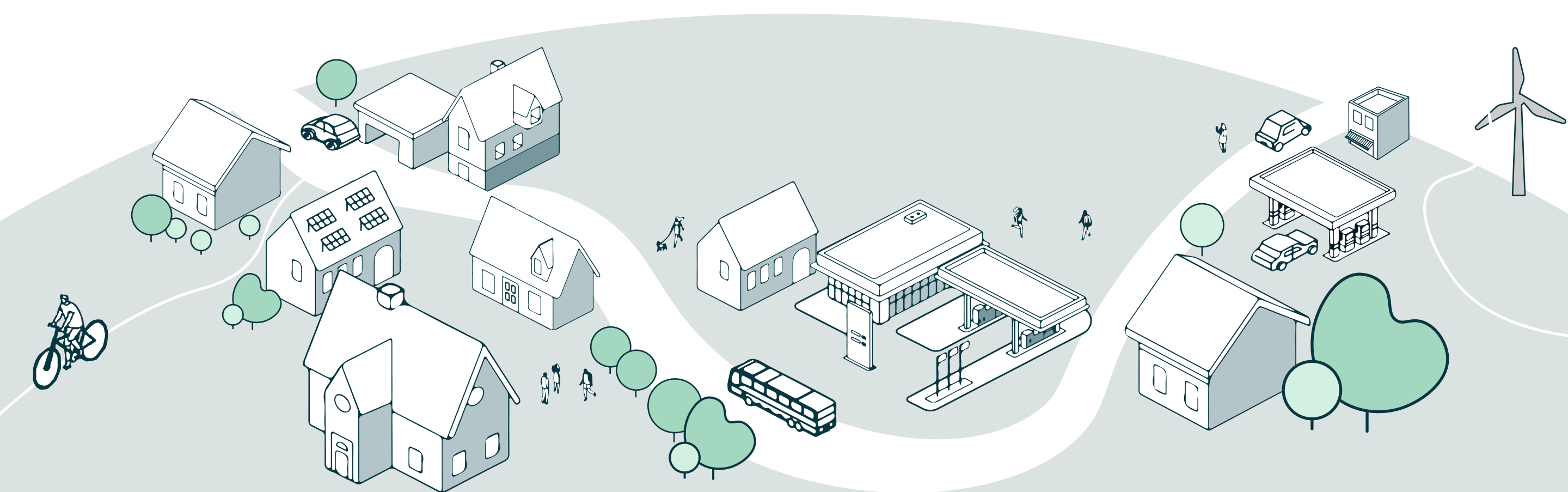
What specific challenges do you anticipate in developing or applying an Assessment Framework for Urban Regeneration (AFUR)?

The main challenge in building an Assessment Framework for Urban Regeneration is ensuring that the observed impacts can be not only reliably measured, but also effectively attributed to specific regeneration interventions.. Cities and towns are immensely complex systems, therefore identifying individual impact claims will be a difficult task requiring low-granularity data and potentially complex computational approaches. However, the REGEN team is well-equipped with the knowledge of over 20 international partners, making it ideal for tackling challenges like this!

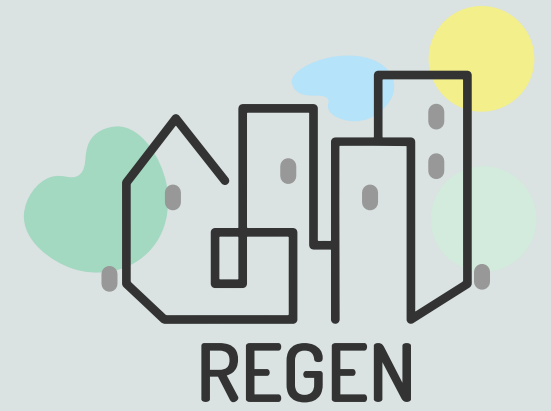


What role will your team play in developing strategies to improve urban planning best practices through neighbourhood regeneration interventions?

At The Impact Lab, we believe that a lot has already been done internationally in the field of people and nature-centred urban planning. Thus, one of the first things we have done was to collect more than 100 urban innovation toolboxes and guides from around the world that can inspire and guide us without re-inventing the wheel. Having said that, together with our close partner LISER, we are also working on documenting the REGEN process of living lab implementation so that our own experience becomes something others can keep on building on in the future.



THE **IMPACT** LAB™



REGENeration of neighbourhoods towards a low-carbon,
inclusive and affordable built environment

Want to learn more?

<https://regenproject.eu/>

and follow us on social media



@RegenEuProject



REGEN EU Project

