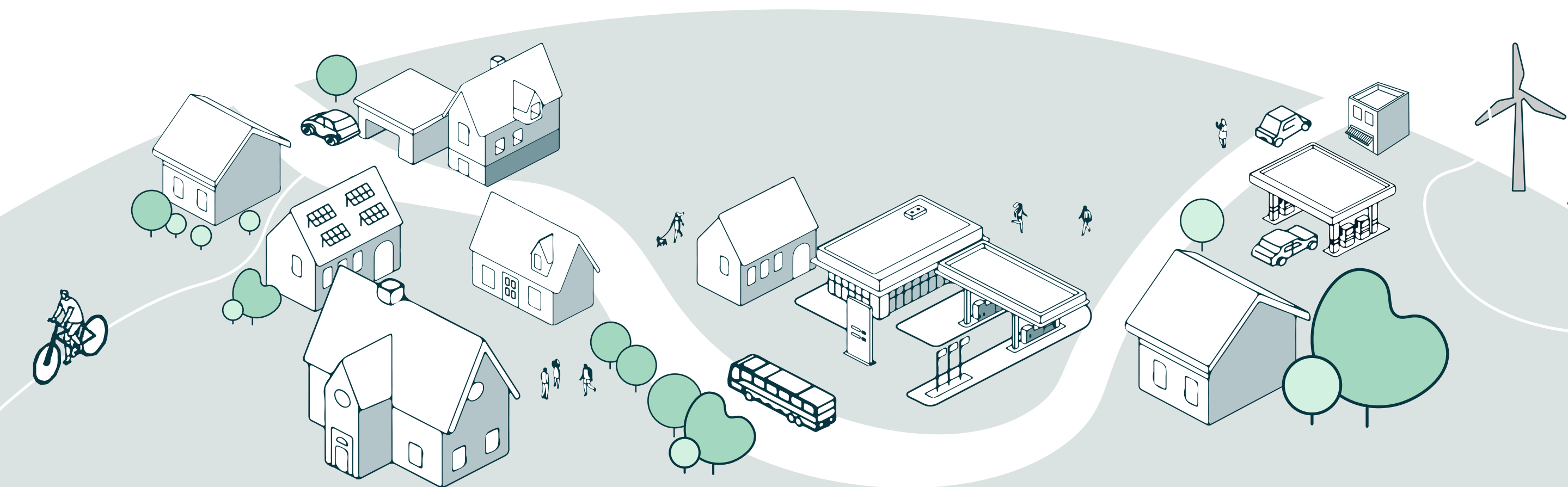


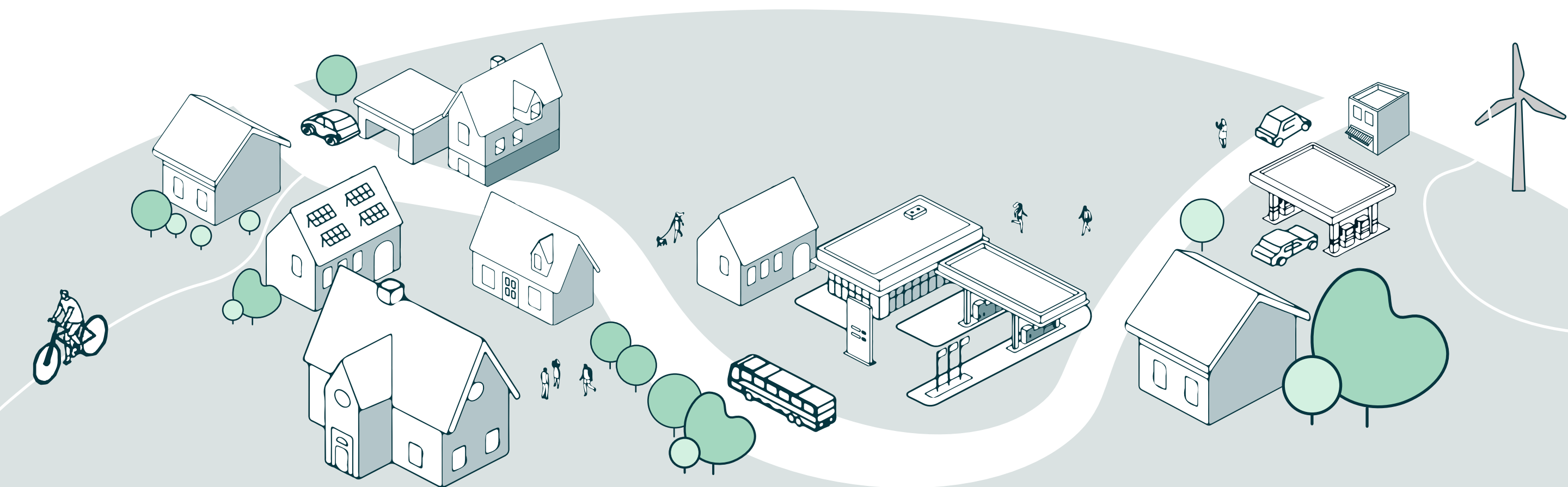
MIGRATION RESEARCH & INCLUSION



Can you introduce your organization?

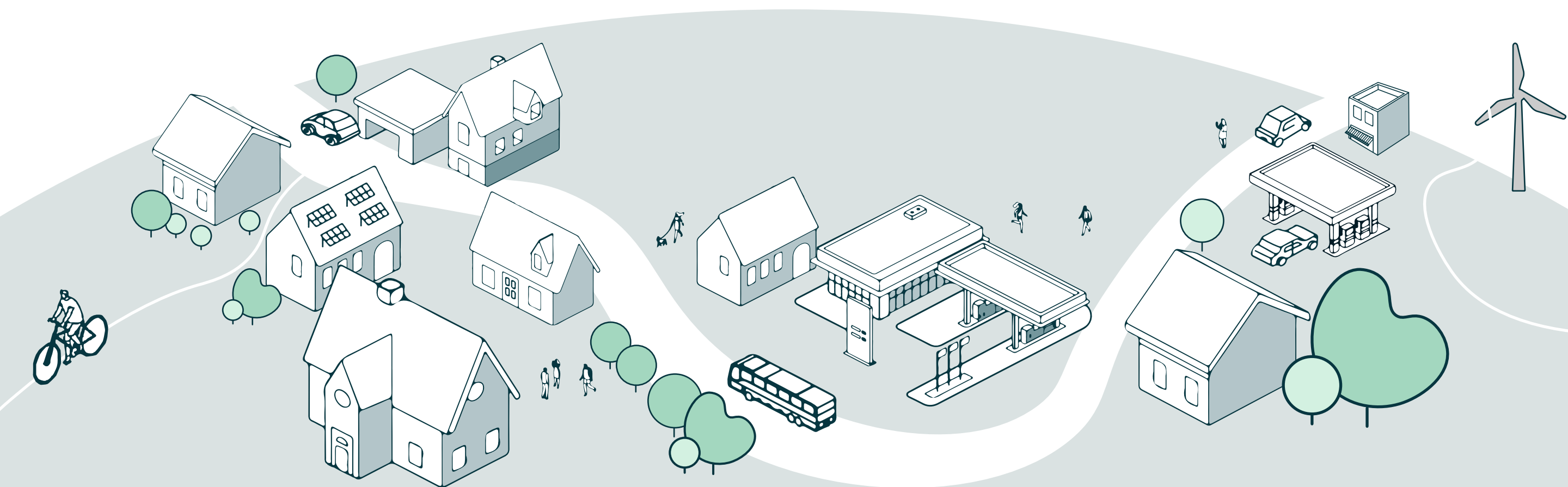
Begirune Foundation is an organisation focused on the analysis of migration and social policy within the Basque Country, Spain, and Europe.

It collaborates with public administrations and third-sector entities, offering applied research, intercultural training, and initiatives aimed at enhancing social inclusion and cohesion. Additionally, it actively participates in educational programmes alongside local entities.



How does your organization's expertise contribute to the REGEN project's goals of paving the way toward sustainable and lasting people-centric neighbourhood regeneration through the development of an Assessment Framework for Urban Regeneration (AFUR)?

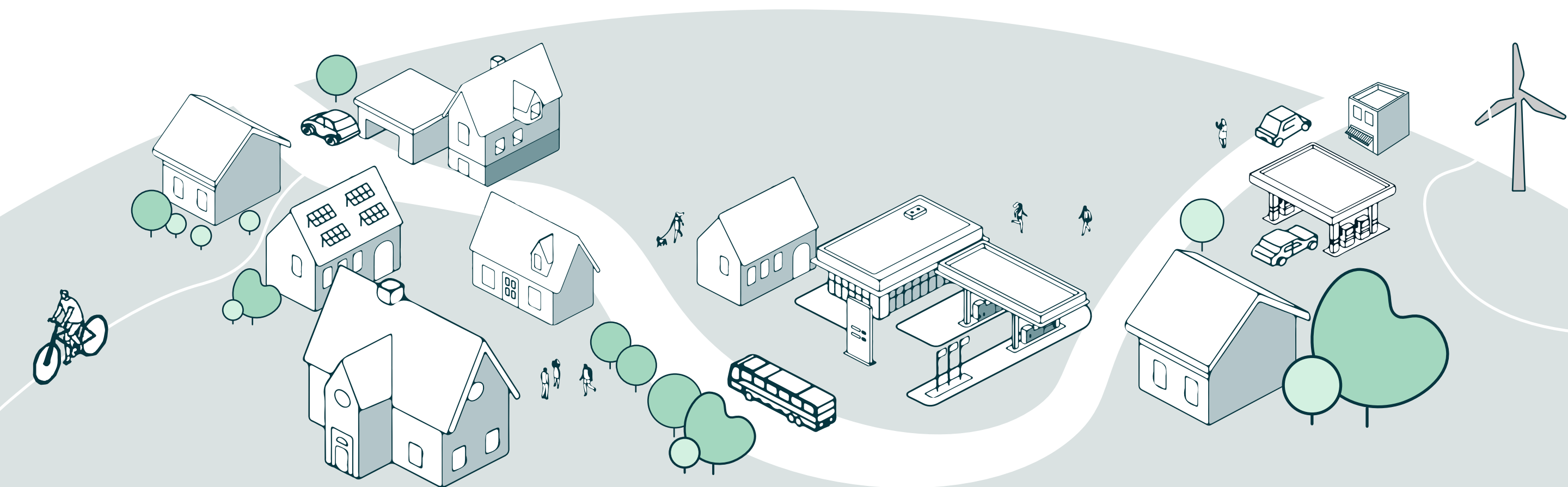
In the REGEN project, Begirune Fundazioa is responsible for ensuring active citizen engagement within one of the Demo Cases. This includes facilitating community involvement in the project's activities to foster people-centric approaches, ensuring that local perspectives and needs are integrated into the development of the Assessment Framework for Urban Regeneration (AFUR), which aims to guide sustainable and lasting neighbourhood regeneration efforts.



What specific challenges do you anticipate in developing or applying an Assessment Framework for Urban Regeneration (AFUR)?

There is limited tradition of active civic participation in Laredo, which could challenge the successful development and implementation of the Assessment Framework for Urban Regeneration (AFUR).

The complexity of certain project tools may be difficult for residents to navigate, potentially hindering their engagement. Another anticipated challenge lies in demonstrating the tangible benefits of the project to the community, as motivating people to see its long-term value is crucial for sustained participation and impact.



Want to learn more?

<https://regenproject.eu/>

and follow us on social media



@RegenEuProject



REGEN EU Project

