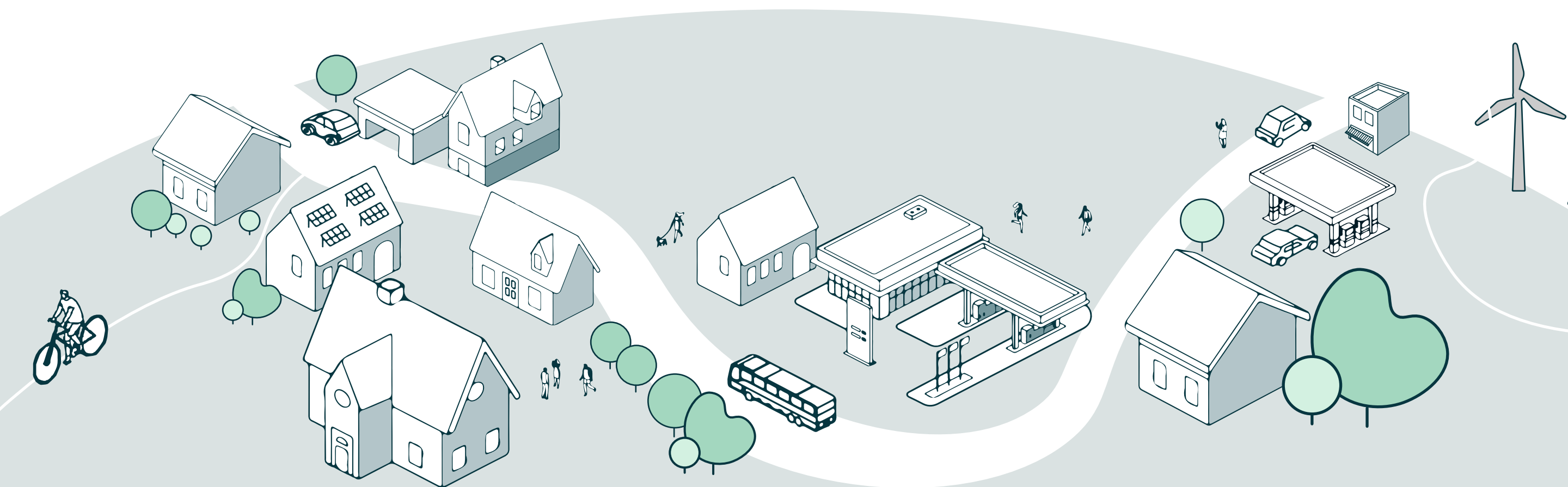
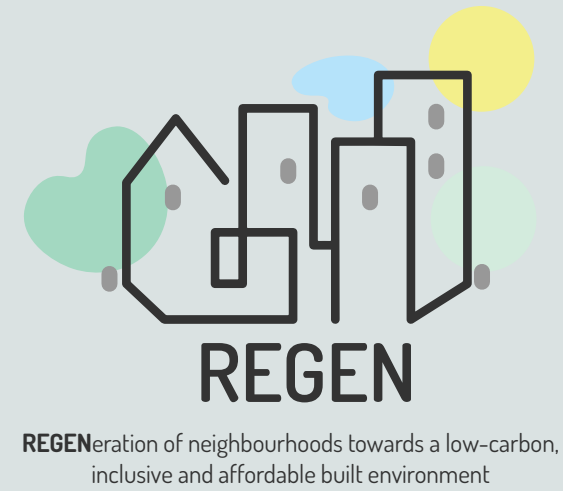


# COMMUNE OF BECKERICH







The Commune is located in Beckerich (divided into 8 sections) and is bounded on the west by the Belgian border, which separates it from the province of Luxembourg.

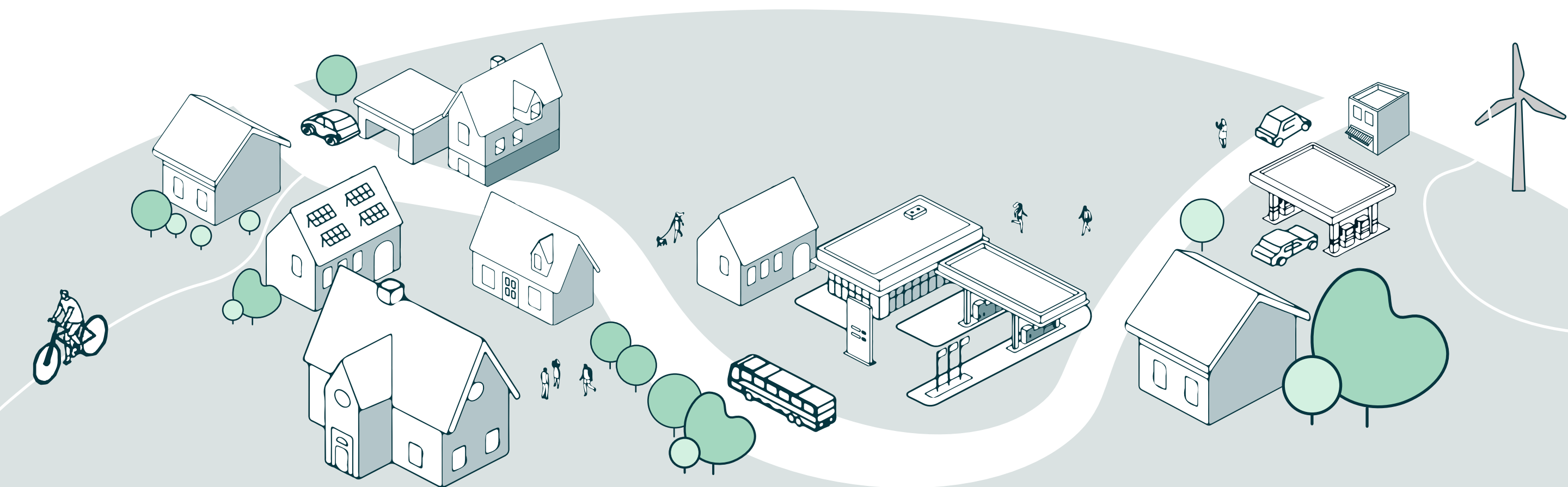
A commune is the smallest administrative subdivision of Luxembourg, which is divided at the highest level into twelve cantons, and is a level 2 local administrative unit. As of September 1, 2023, the country is subdivided into 100 communes. Twelve of these communes hold the title of city, which in itself makes no difference in terms of powers or administration. In the hierarchy of administrative subdivisions, the communes come below the cantons, which are directly below the state.

A stylized illustration of a smart city neighborhood. The scene is set against a light blue background with a winding path. On the left, a person is riding a bicycle. Next to them are several houses, some with solar panels on their roofs. A small car is parked near one of the houses. In the center, there is a school building with a playground area where a few children are playing. A bus is stopped at a bus stop. To the right of the bus stop is a gas station with a car being refueled. Further right, there is a wind turbine and a small building. The overall style is clean and modern, with a focus on sustainable and smart infrastructure.

What specific challenges do you anticipate in developing or applying an Assessment Framework for Urban Regeneration (AFUR)?

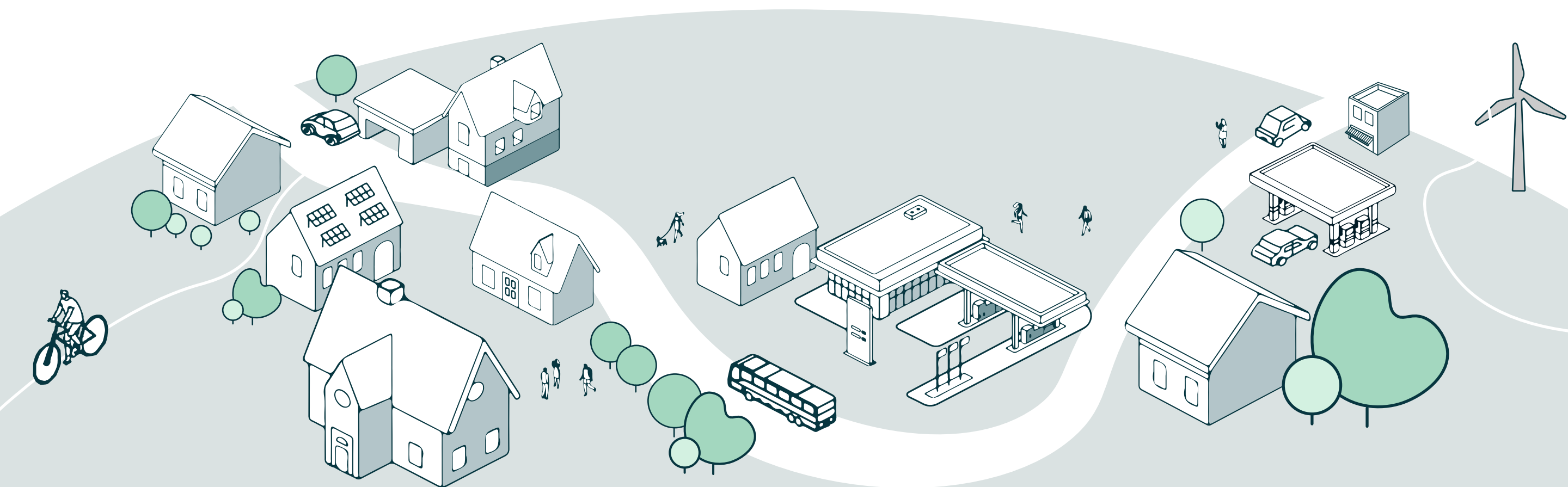
Each neighborhood is unique, with specific social, economic, cultural and environmental dynamics, so designing a framework that is adaptable while remaining standardized seems difficult.

The challenge would be to balance personalization with uniformity of indicators, consensus among stakeholders, avoid indicator overload and prioritize these dimensions to avoid imbalances, obtain reliable data while respecting residents' privacy, win the trust of local communities and translate intangible aspects into measurable indicators.

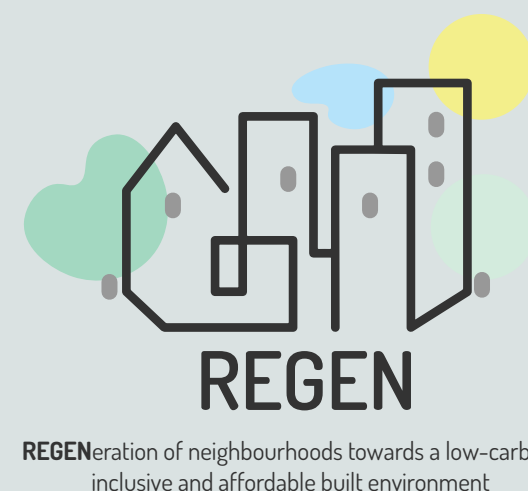


What role will your team play in developing strategies to improve urban planning best practices through neighbourhood regeneration interventions?

Our team will play a key role in developing strategies to improve urban planning best practices through neighborhood regeneration interventions by identifying needs and opportunities using GIS tools and socio-economic data, designing sustainable urban models, ensuring citizen participation, analyzing successful regeneration projects from other countries, facilitating cooperation among stakeholders, integrating feedback to refine strategies, and ensuring effective communication of results.







# Want to learn more?

<https://regenproject.eu/>

## and follow us on social media



@RegenEuProject



REGEN EU Project

