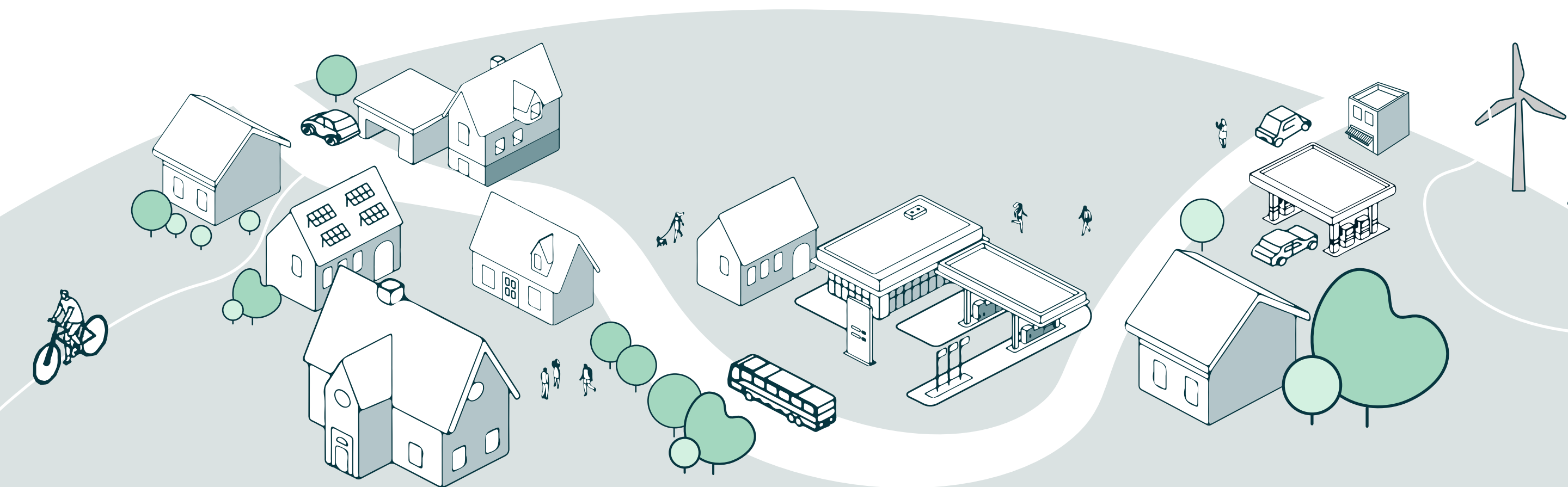
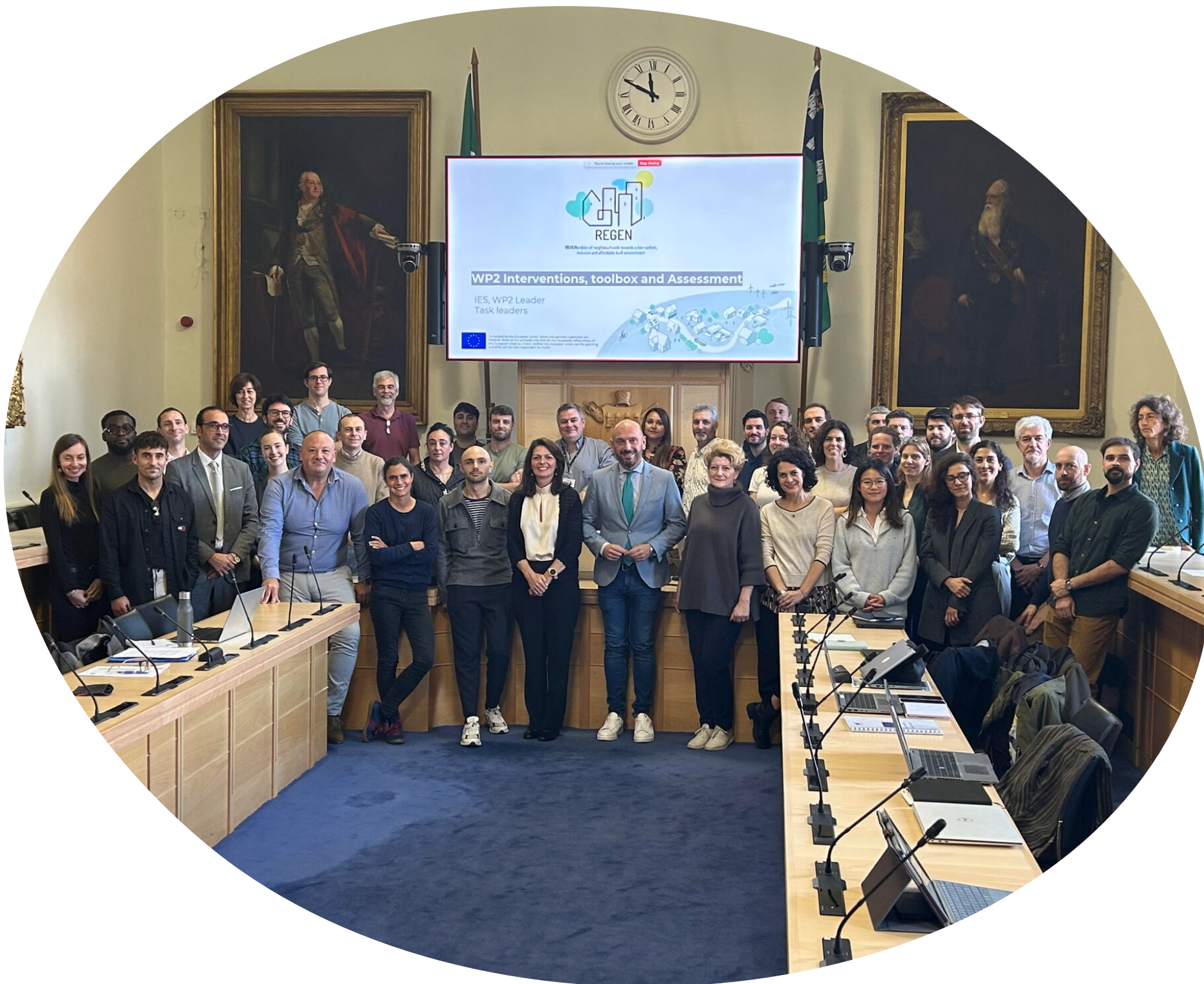
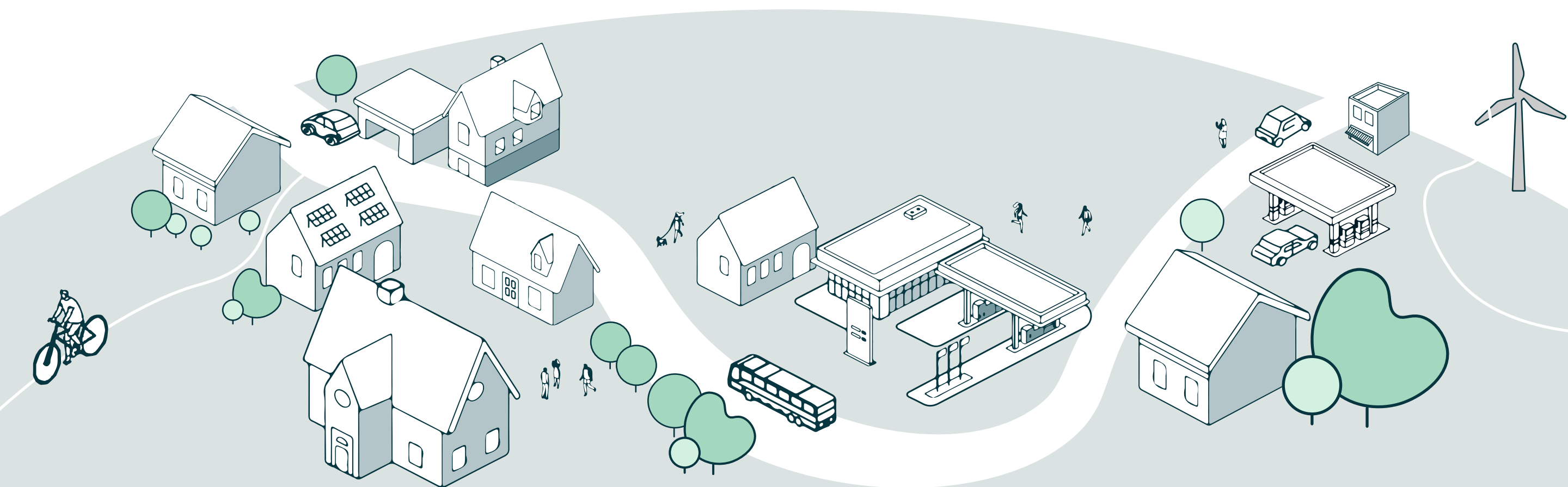


MUNICIPAL COMPANY



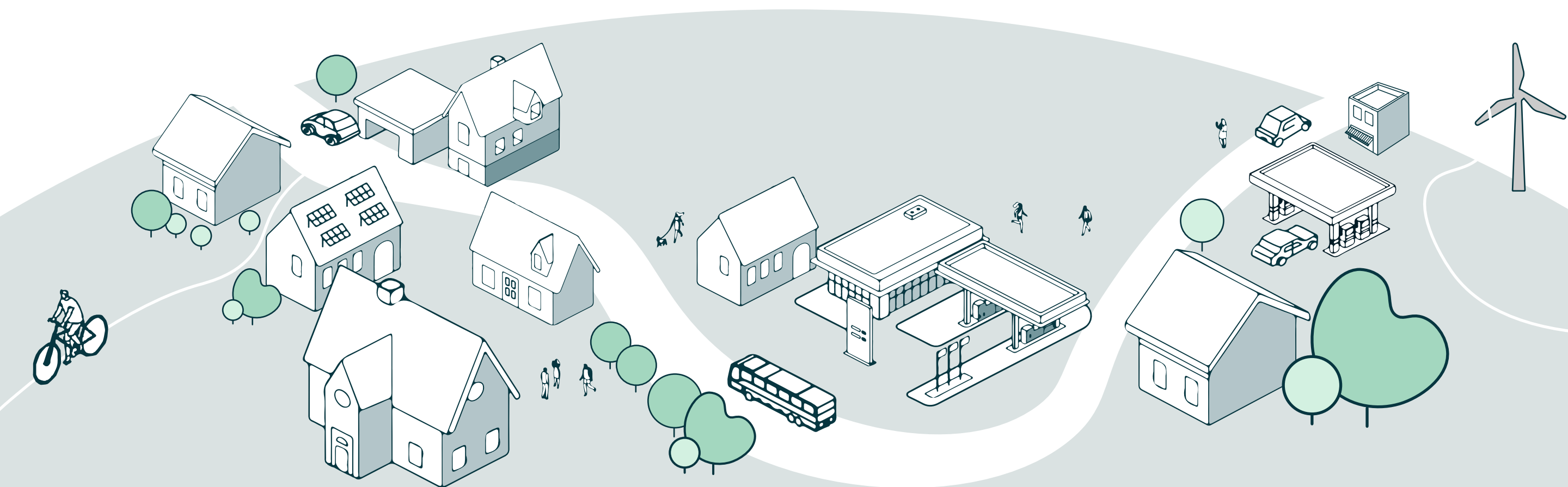
Can you introduce your organization?

AMAT - Mobility, Environment, and Territory Agency is a municipal company in Milan that supports the city in sustainable mobility, urban planning, and environmental protection. It plays a key role in strategic projects like public transport improvement, air quality monitoring, energy efficiency, and smart urban development, driving Milan's transition to sustainability.



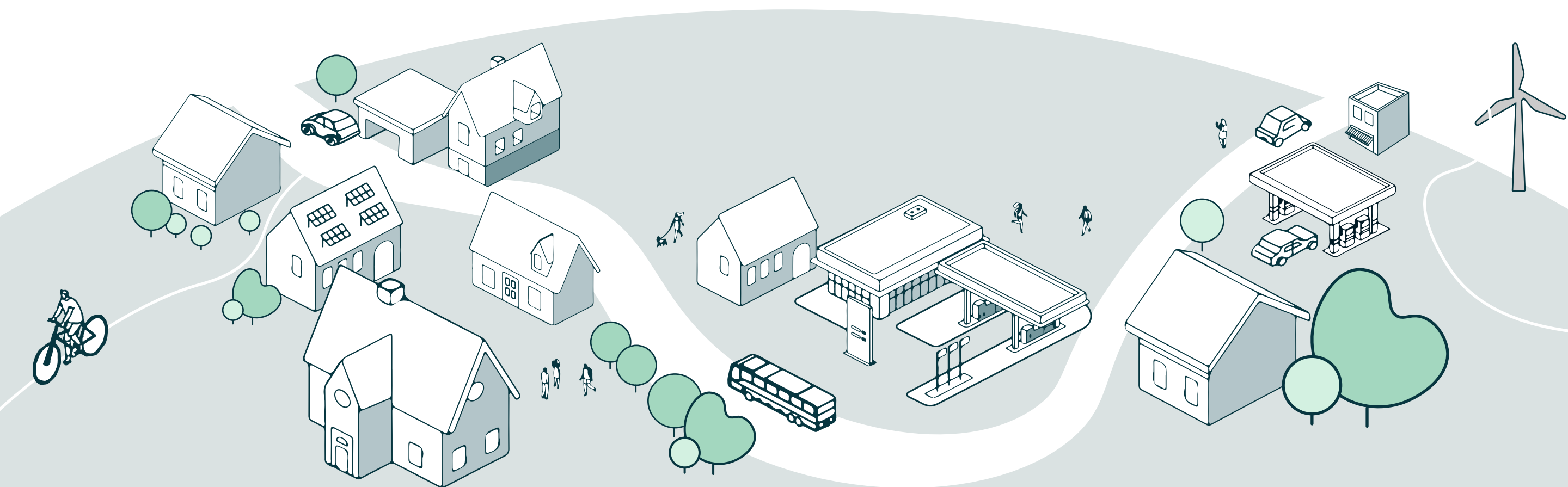
How does your organization's expertise contribute to the REGEN project's goals of paving the way toward sustainable and lasting people-centric neighbourhood regeneration through the development of an Assessment Framework for Urban Regeneration (AFUR)?

AMAT's expertise supports the REGEN project by contributing data-driven insights and practical experience in sustainable mobility, environmental monitoring, and urban planning. This helps shape the AFUR that incorporates key sustainability metrics and prioritizes inclusive, people-centered neighborhood regeneration. AMAT's interdisciplinary approach ensures the framework promotes cohesive and lasting urban renewal.



How will your organization contribute to the development/monitoring of the ten virtual use cases demonstration projects?

AMAT will contribute to the virtual use case demonstration projects by offering expertise in data analysis, sustainability planning, and virtual scenario modeling. We will support the development of tailored strategies, monitor key indicators, and provide insights to ensure each project aligns with sustainable and inclusive urban regeneration goals.



Want to learn more?

<https://regenproject.eu/>

and follow us on social media



@RegenEuProject



REGEN EU Project

